



## The Jet Pulverizer Company

Jet Milling Experts Since 1946, From the Creators of the  
Micron Master® Jet Mill



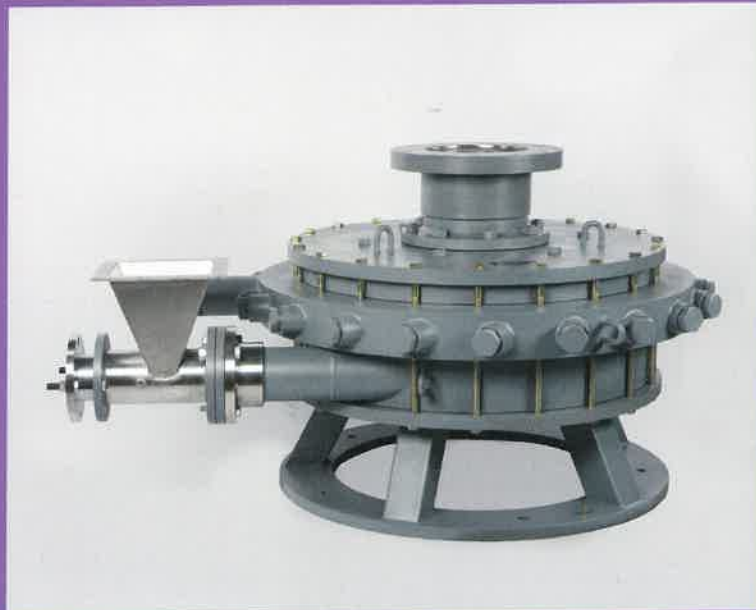
[JetPulverizer.com](http://JetPulverizer.com)

## Custom Processing Services

The Custom Processing Division of Jet Pulverizer specializes in size reduction of dry powders in the ranges of 0.50 to 44 microns. As an ISO 9001 and FDA registered company, we support our customers through test grinding, pilot scale, toll processing and process development. We occupy 15,000 square feet of workspace that includes sixteen dedicated processing stations. Processing resources include 12,000 SCFM of oil-free compressed air, 1,000 SCFM of nitrogen gas and 6,000 gallons of liquid nitrogen storage.

## Process Technologies and Capacities

While we specialize in jet milling, we are a vertically integrated particle size reduction service provider which includes pre-crushing, blending, drying, classifying, mechanical milling, jet milling, and particle size analysis. We have expanded our offering in cGMP level processing by creating an ISO-8 Room and developing best practices for the pharmaceutical, nutraceutical and food industries.



## Original Equipment Manufacturing

Our legendary Micron-Master® jet pulverizers are a complete line of jet energy mills designed to grind any type of crystalline or friable materials to your exact specifications. Our mills deliver precise, consistent and uniform processing performance with no detectable product contamination or heat of attrition.

## Designed and Built to Meet Your Needs

We design, engineer and manufacture all of our mills to fit a wide range of clients' needs. From 1" Laboratory to 36" Production mills, from sanitary mills with IQ/OQ protocol documentation to commissioning, repair and parts, our OEM team is a solution for all of your fine powder applications.

- Cosmetics
- Pharmaceuticals
- Batteries
- Ceramics
- Technology
- 3D Printing

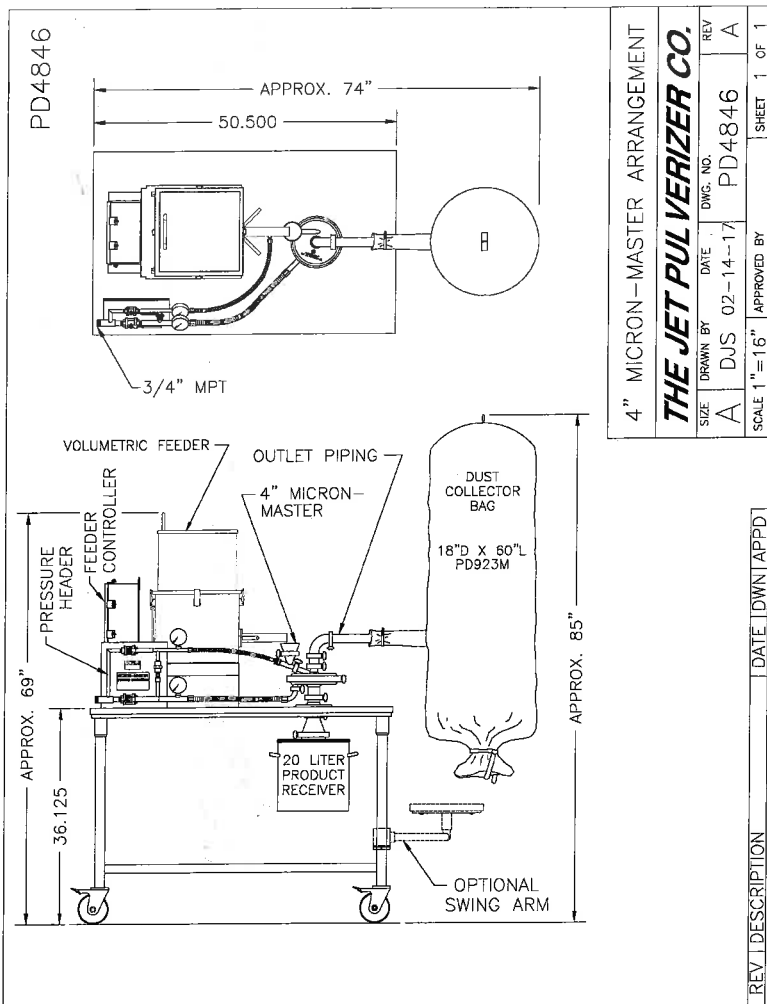
## How Jet Mills Work

Size reduction is the result of the high-velocity collisions between particles of the process material itself. The interior of the chamber is designed to allow recirculation of over-sized particles, enhancing the incidence and the effect of these collisions.

As particles are reduced in size and progressively lose mass, they naturally migrate toward the central discharge port, making precise classification both automatic and precisely controllable.



# Typical 4" System Arrangement



# Performance Guidelines

Mile Sizes	Air Required to 100 PSIG [690kPa]	Typical Feed Rates
1"	7 SCFM [12 m <sup>3</sup> /hr]	0.2-2 lbs/hr [0.09-.90 kg/hr]
2"	20 SCFM [34 m <sup>3</sup> /hr]	1-15 lbs/hr [0.45-7.0 kg/hr]
4"	50 SCFM [85 m <sup>3</sup> /hr]	2-50 lbs/hr [0.90-22 kg/hr]
8"	100 SCFM [170 m <sup>3</sup> /hr]	15-100 lbs/hr [7-45 kg/hr]
12"	225 SCFM [380 m <sup>3</sup> /hr]	25-250 lbs/hr [11-115 kg/hr]
15"	350 SCFM [595 m <sup>3</sup> /hr]	50-400 lbs/hr [22-180 kg/hr]
20"	550 SCFM [935 m <sup>3</sup> /hr]	100-800 lbs/hr [45-360 kg/hr]
24"	1200 SCFM [2040 m <sup>3</sup> /hr]	200-1500 lbs/hr [90-680 kg/hr]
30"	1600 SCFM [2720 m <sup>3</sup> /hr]	400-4000 lbs/hr [180-1800 kg/hr]
36"	2900 SCFM [4930 m <sup>3</sup> /hr]	800-6000 lbs/hr [360-2700 kg/hr]



15" Micron-Master Sanitary Mill



**Made In the USA**

**The Jet Pulverizer Company, Inc<sup>®</sup>**

**856-235-5554**

1255 North Church Street  
 Moorestown, NJ 08057 USA  
 contact-us@jetpul.com

JetPulverizer.com